



# **The global prevalence of intimate partner homicide: What is the scale?**

Heidi Stöckl,  
Gender Violence & Health Centre  
Department of Global Health and Development

**Improving health worldwide**

**[www.lshtm.ac.uk](http://www.lshtm.ac.uk)**

 **same**  
social and mathematical epidemiology

LONDON  
SCHOOL of  
HYGIENE  
& TROPICAL  
MEDICINE



# Why should we study intimate partner homicide?

## Homicide mortality

In 2000, an estimated 1.6 million people worldwide lost their lives to violence. Around half of these deaths were suicides, nearly one third were homicides, and about one-fifth were casualties of armed conflict.

Overall, men are more likely to be killed by any perpetrator

Women are more likely to be killed by an intimate partner than men

# Homicide



# IPV

- Most extreme health outcome of IPV
- The majority of women who are killed by an intimate partner have a reported history of intimate partner violence (Campbell 2003)
- Men who are murdered by their intimate partner often have a track record of domestic abuse (Serran 2004)







# JOANNA SIMPSON,

aged 46



Joanna Simpson was killed by her estranged husband, Robert Brown, in her home in 2010.

After their divorce, Brown drove their children back to Simpson's after a visit. He took a hammer in a bag and, allowed into her home, killed her with it. Their children could hear the blows.

Brown was convicted of manslaughter in 2011 and is serving a 26-year sentence.

<http://www.theguardian.com/society/2015/feb/08/killing-of-women-by-men-record-database-femicide>

 **same**  
social and mathematical epidemiology

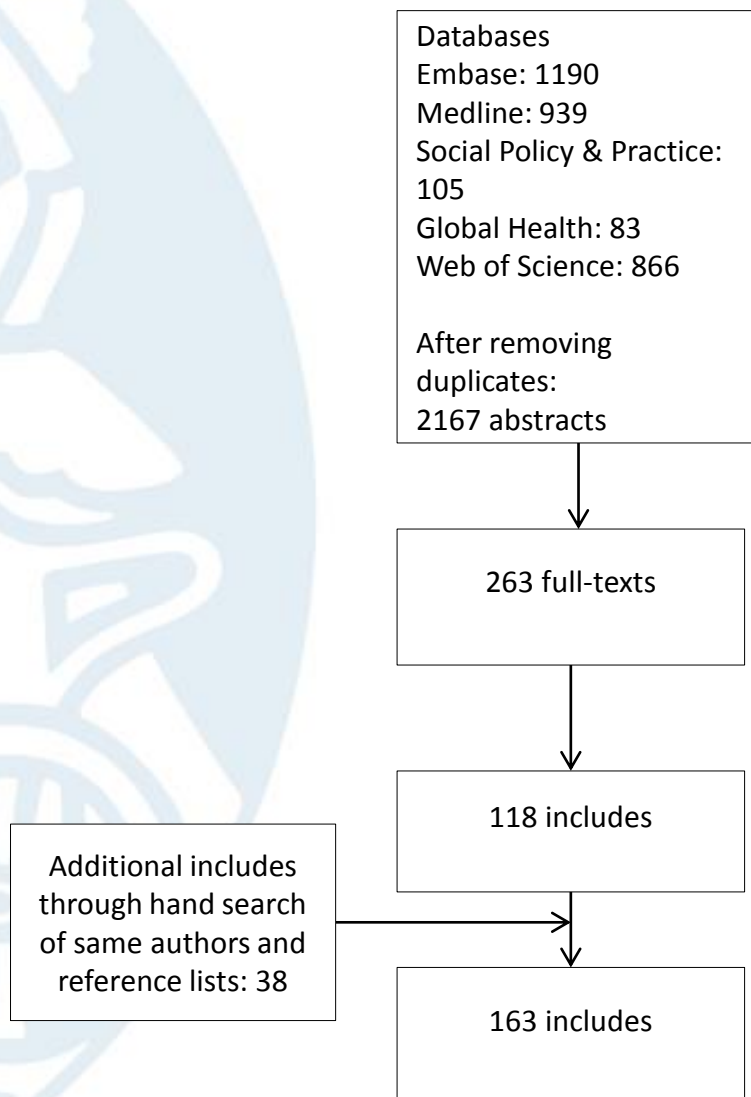
LONDON  
SCHOOL of  
HYGIENE  
& TROPICAL  
MEDICINE



# Aim

To estimate the prevalence  
of female and male  
intimate partner  
homicide across the  
world

# Systematic review



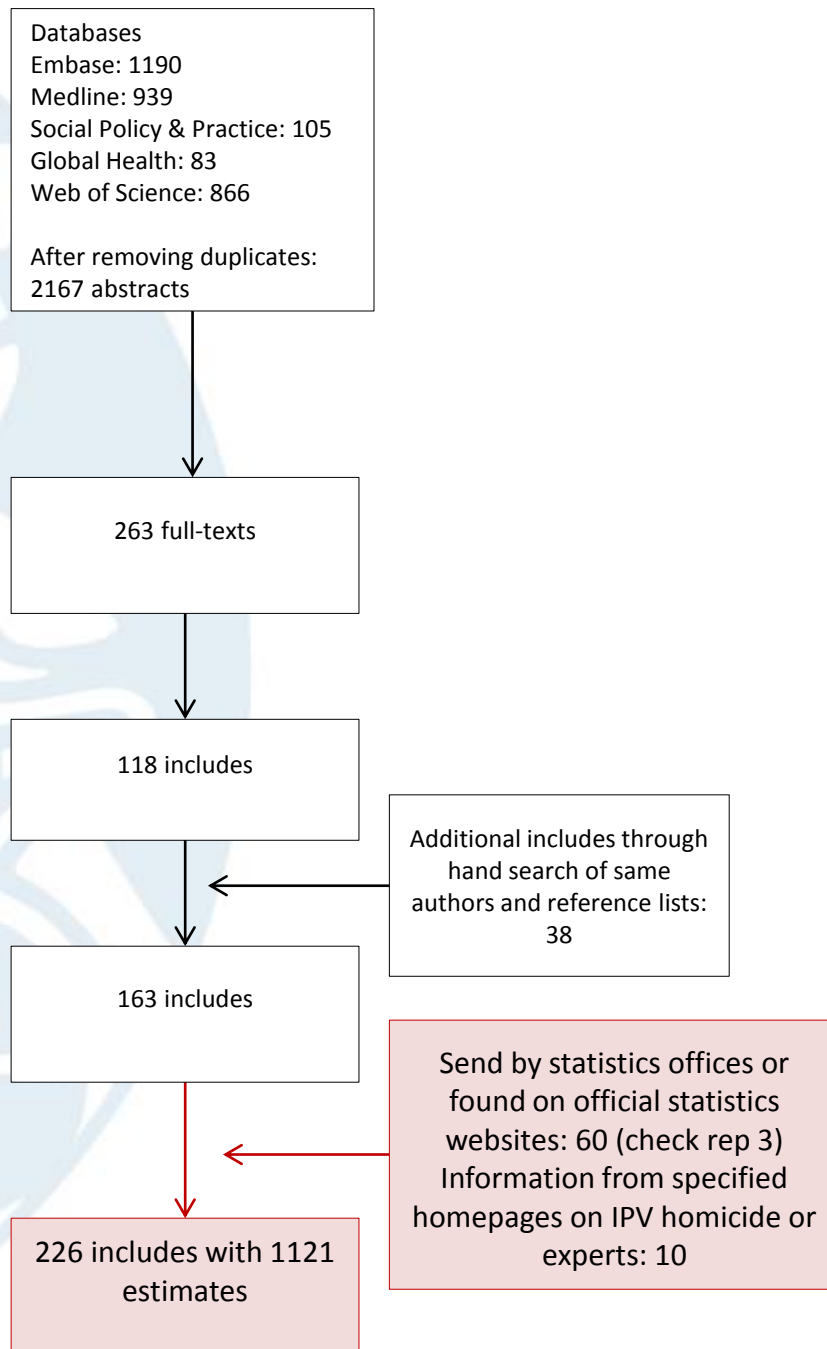
## Search strategy:

1. (partner or partners or ex-partners or ex-partner or husband or husbands or wife or wives or co-habiting or common-law or married or marital or marriage or divorce or divorced or couple or couples or boyfriend\* or girlfriend\* or spouse or spouses or lover or spousal)
2. partner violence/ or marriage/
3. 1 OR 2
4. (murder\* or killings or killing or genocide\* or deaths wrongful or wrongful deaths or death wrongful or homicide\* or wrongful death or femicide or uxoricide or spou\$ homicide)
5. Homicide
6. 4 OR 5
7. 3 and 6
8. limit 7 to yr="1990 -Current"



# Statistical offices

Searched web pages and contacted statistical offices in every country around the world





# Research is an intervention

- Dear Heidi Stoeckl,

Thank you for visiting the Belize Police Department Website. We apologize for the late reply. In regards to your request on Statistics of Homicide according to victim offender relationships, we regret to inform you that we have not been keeping track of this for all cases. Our statistics on the website was gathered manually and not standardized across the board for all criminal records. **This year, our criminal records has been standardized and are now entered electronically into a database.** This new method should improve our statistics therefore, **this kind of suggestion is taken seriously.**

**Your request and interest in the matter has given us an idea and we will consider it for future use.** We apologize for not being able to provide further statistical information, and we thank you for your contribution in fight against crime.



# Real life experiences

- The back story to the paper was interesting as well. Cincinnati is a medium sized midwest city and had at the time one of the highest gun violence and homicide rates in the country. Ohio and Kentucky have very lax gun control laws. No one had really looked at **women among trauma patients** (shootings, stabbings) so I picked that as a project. I sat in the ER at night interviewing trauma patients who were shot, and all the women trauma patients regardless of cause of injury. **After 2 weeks I noticed relatively few intimate partner violence victims.** I then obtained the **coroner records** and saw why - the **women shot by intimate partners were mostly all dead.** Most were **shot multiple times in the head** and never even came to the hospital, **they went from the house to the coroner.** It was a sad and shocking realization that had not been picked up before.



# Data issues

Type of data

Data issues

Police

National

Mortality

Court

Prison

Missing data on the  
victim-offender  
relationship

- Normally only conducted with current prisoners
- Issues of access

# Analysis

- We selected one estimate per country-year using a quality assessment decision algorithm
  - if there was more than one estimate available for one country per year we used the estimate with the highest quality (representativeness, complete information and by gender, information on all age groups and with inclusive definitions of intimate partner and homicides)
- The median prevalence of intimate partner homicide among all homicides was calculated by country and region overall, and for women and men separately.
- We calculated different scenarios for dealing with homicide cases for which the data is unknown



# Results

## The global prevalence of intimate partner homicide: a systematic review



Heidi Stöckl, Karen Devries, Alexandra Rotstein, Naeemah Abrahams, Jacquelyn Campbell, Charlotte Watts, Claudia Garcia Moreno

### Summary

**Background** Homicide is an important cause of premature mortality globally, but evidence for the magnitude of homicides by intimate partners is scarce and hampered by the large amount of missing information about the victim–offender relationship. The objective of the study was to estimate global and regional prevalence of intimate partner homicide.

*Lancet* 2013; 382: 859–65

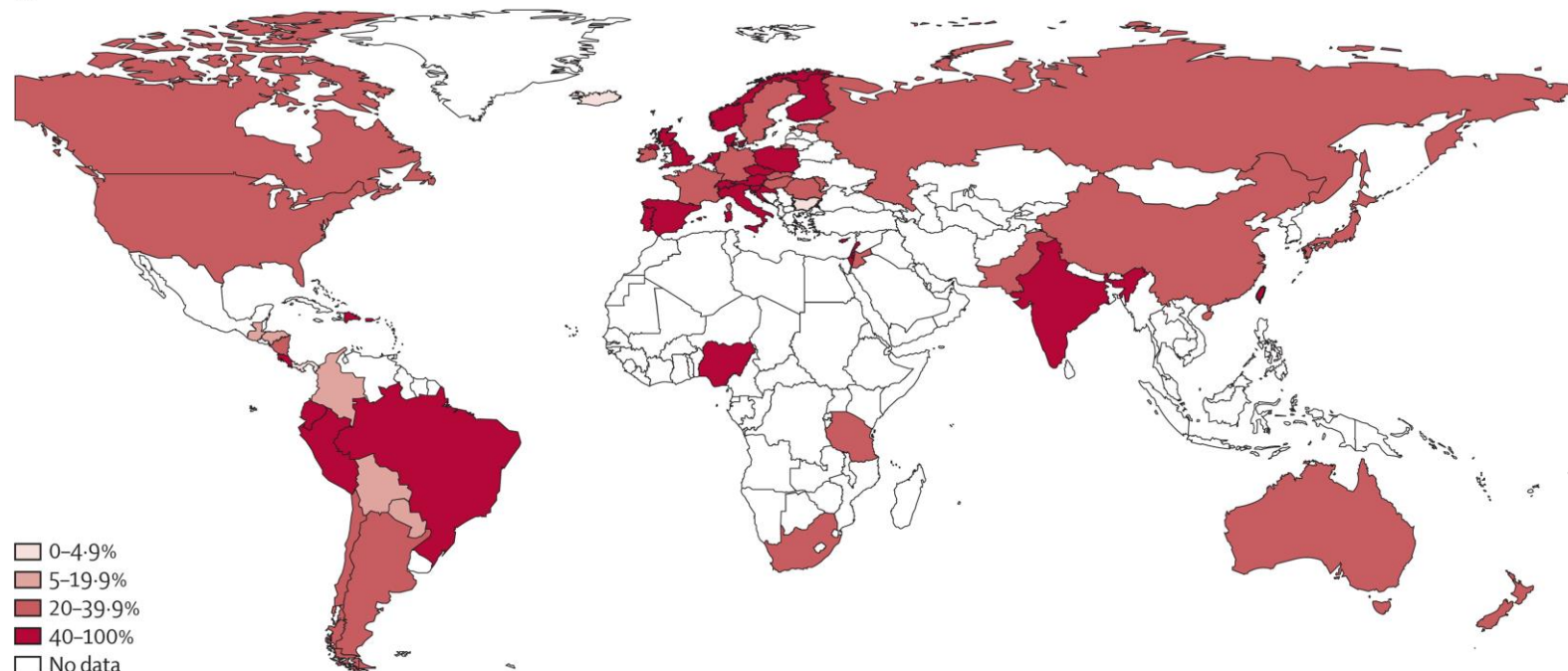
Published Online

June 20, 2013

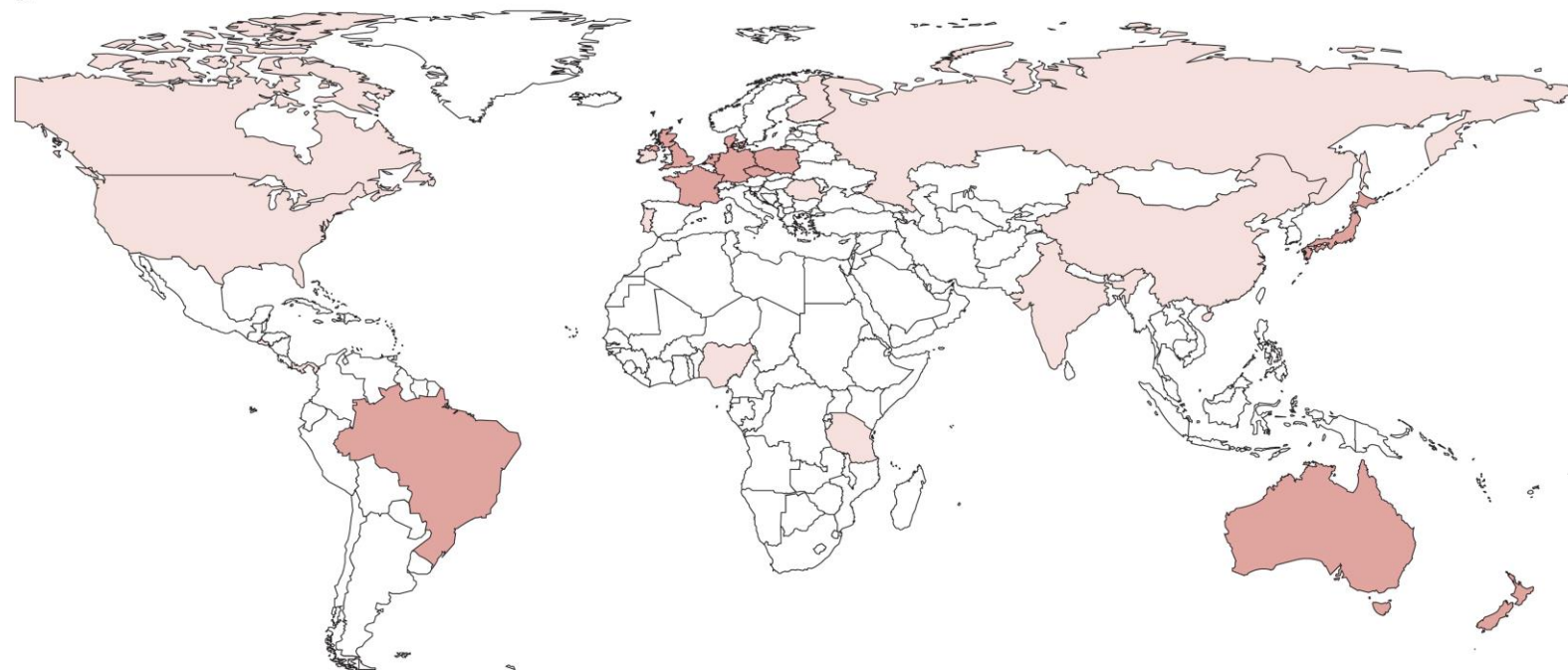
[http://dx.doi.org/10.1016/S0140-6736\(13\)61030-2](http://dx.doi.org/10.1016/S0140-6736(13)61030-2)

- How many female murder victims are killed by their partner?  
**>35%**
- How many male murder victims are killed by their partner?  
**~ 5 %**
- How many male or female murder victims are killed by their partner?  
**> 14%**



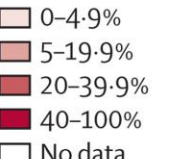
**A**

**% of  
women  
murdered  
by their  
intimate  
partner  
among all  
female  
homicides**

**B**

**% of men  
murdered  
by their  
intimate  
partner  
among all  
male  
homicides**

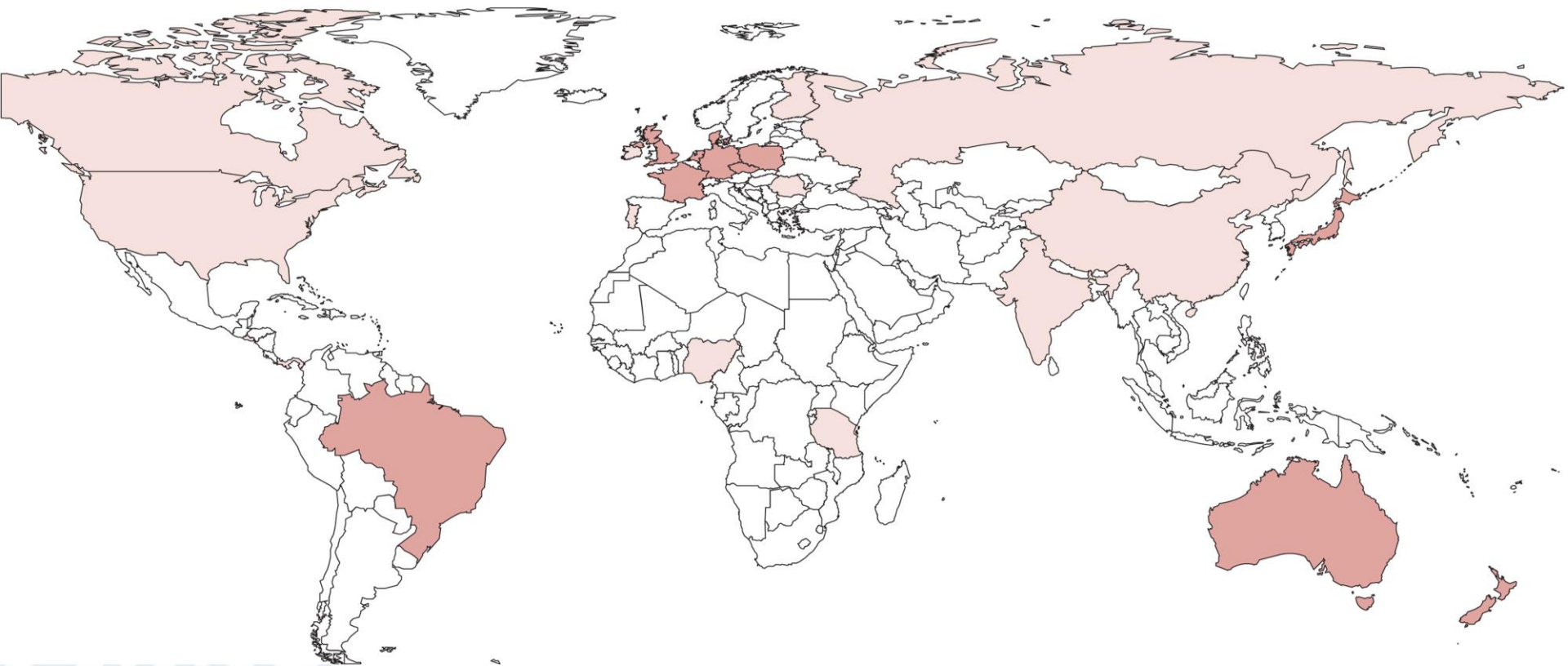
# A



### % of women murdered by their intimate partner among all female homicides



B

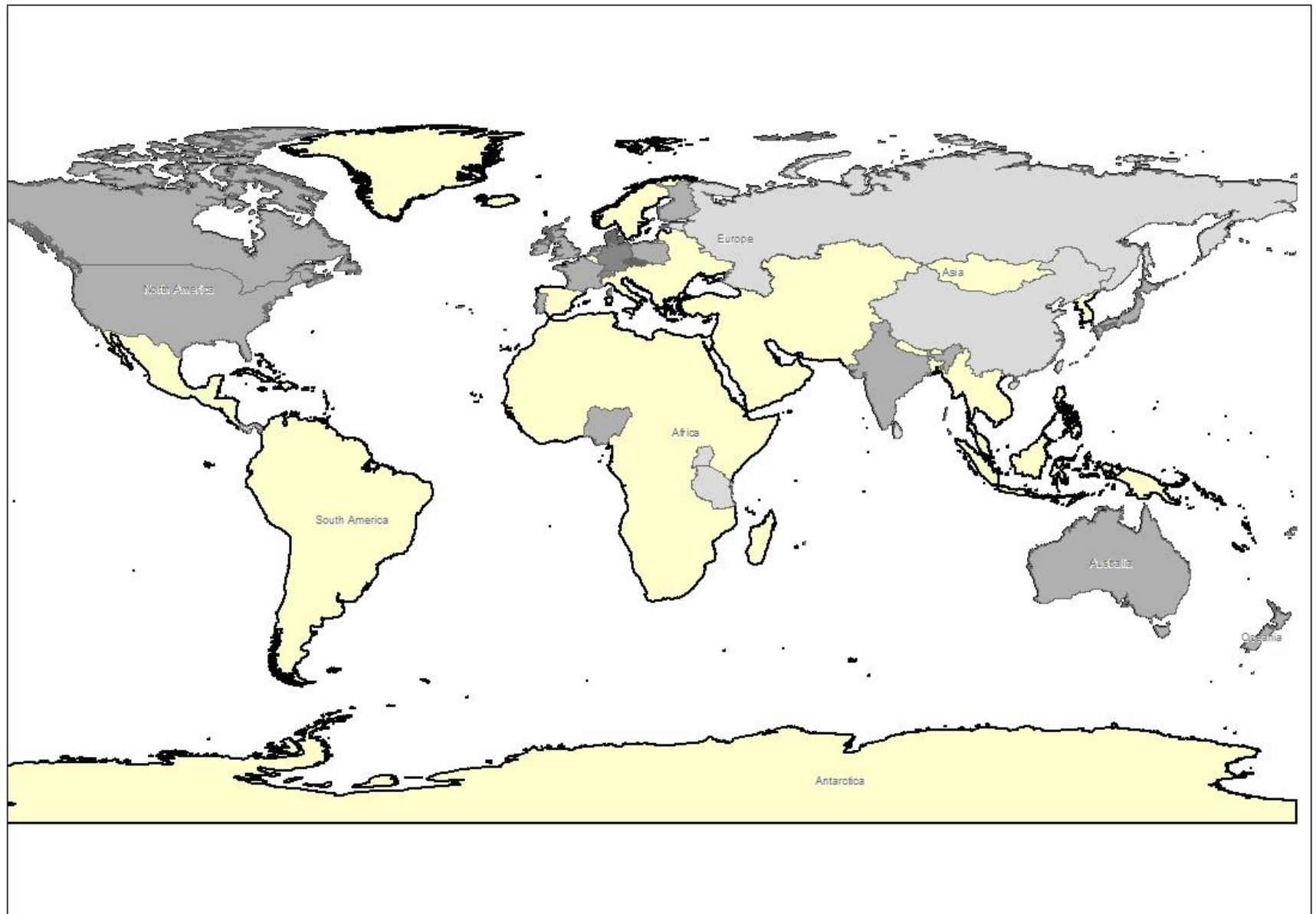


**% of men murdered by their intimate partner among all male homicides**





# % of IPV murders among all homicides



	Total homicides of included studies	Conservative estimates (missing cases are regarded as non-partner homicides)
<b>Prevalence of intimate partner homicides among male and female homicides</b>		
Worldwide (n=32)	492 340	13.54% (9.24–18.23)
High-income countries (n=18)*	476 537	14.92% (9.24–18.23)
Africa (n=4)	4861	7.31% (5.65–18.31)
Americas (n=3)	5112	0.72% (0.64–9.65)
Eastern Mediterranean (n=0)	..	..
Low-income and middle-income Europe (n=2)	419	10.98% (9.68–12.28)
Southeast Asia (n=2)	601	18.75% (11.26–18.75)
Western Pacific (n=3)	4810	4.82% (4.82–9.84)
<b>Prevalence of intimate partner homicides among all female homicides</b>		
Worldwide (n=63)	133 691	38.55% (30.84–45.31)
High-income countries (n=36)	115 515	41.19% (30.84–44.45)
Africa (n=4)	6219	40.11% (38.55–41.67)
Americas (n=15)	9658	40.54% (7.51–54.84)
Eastern Mediterranean (n=2)	887	14.41% (5.26–23.56)
Low-income and middle-income Europe (n=3)	200	20.00% (1.82–37.78)
Southeast Asia (n=1)	80	58.75% (58.75–58.75)
Western Pacific (n=2)	1132	19.12% (19.12–21.29)
<b>Prevalence of intimate partner homicides among all male homicides</b>		
Worldwide (n=28)	373 077	6.28% (3.13–6.34)
High-income countries (n=18)	364 410	6.28% (3.13–6.34)
Africa (n=3)	235	4.12% (1.55–6.38)
Americas (n=2)	4580	0.43% (0.00–6.54)
Eastern Mediterranean (n=0)	..	..
Low-income and middle-income Europe (n=2)	226	3.59% (3.18–4.00)
Southeast Asia (n=1)	334	0.87% (0.87–0.87)
Western Pacific (n=2)	3292	1.33% (1.33–2.78)

# Conservative estimates of intimate partner homicide



# If missing data is considered..

% of IPV murders among all female homicides:

> 45%

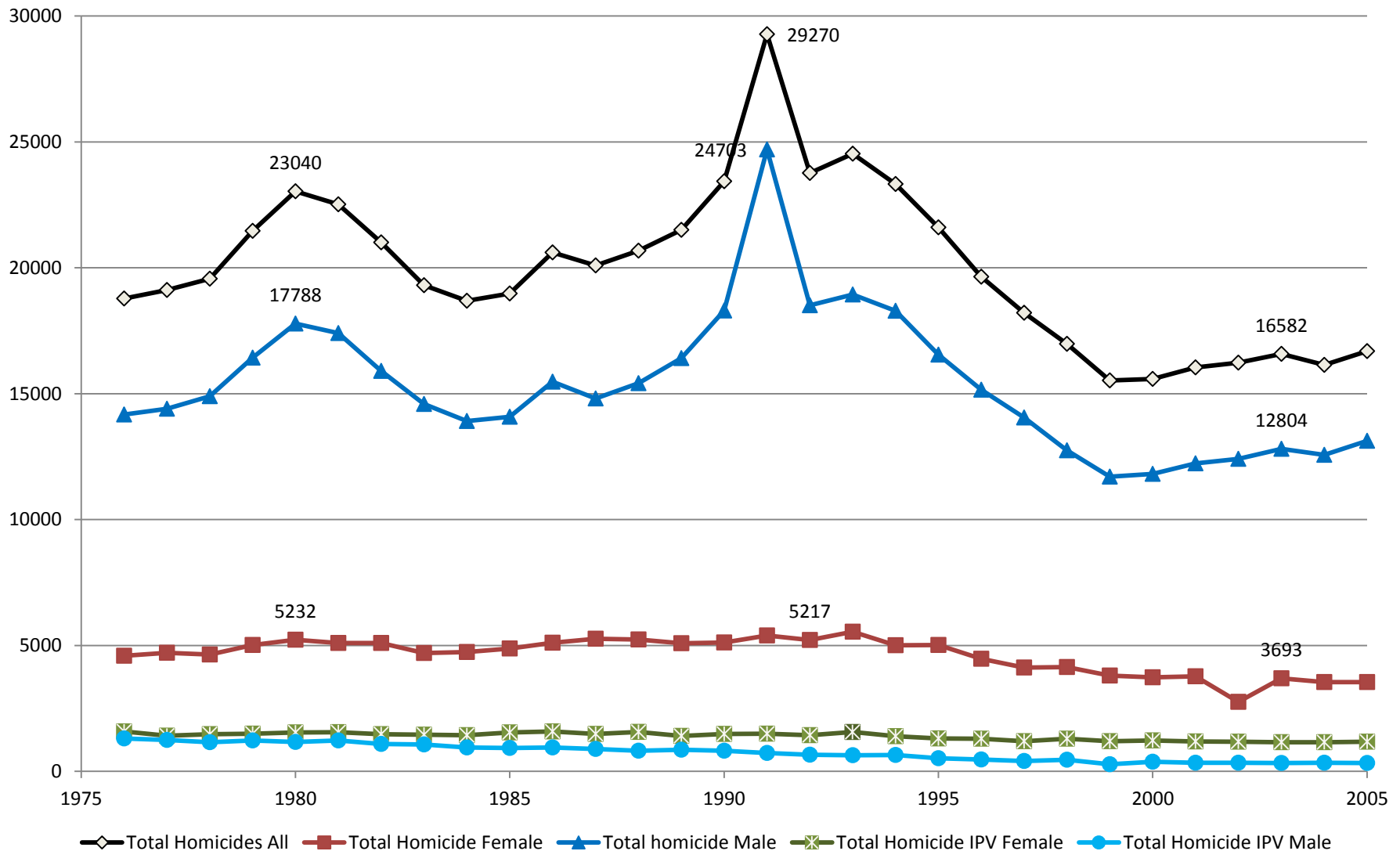
% of IPV murders among all male homicides:

6%

% of IPV murders among all homicides:

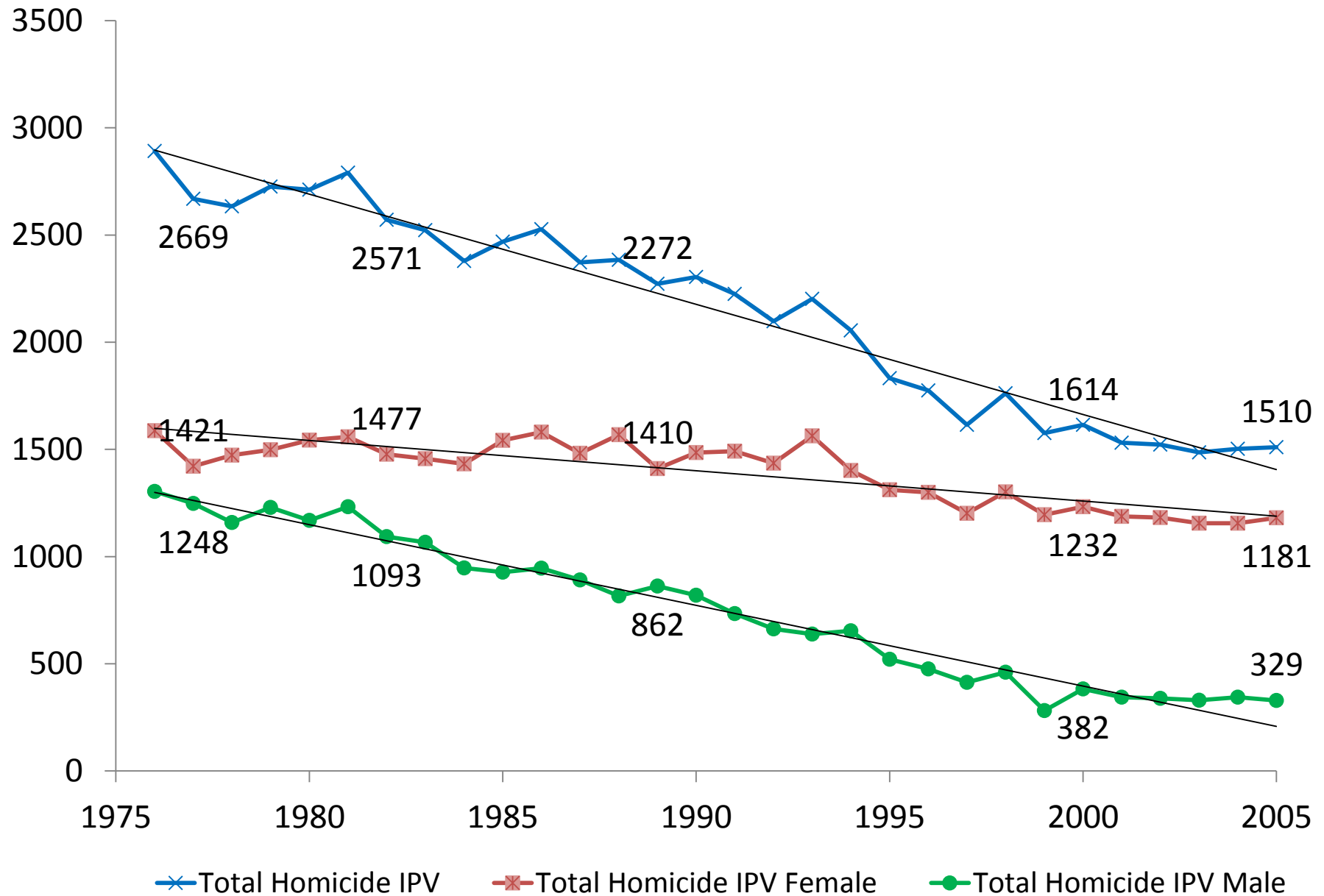
>17%

# Trends in homicide and intimate partner homicides in the USA

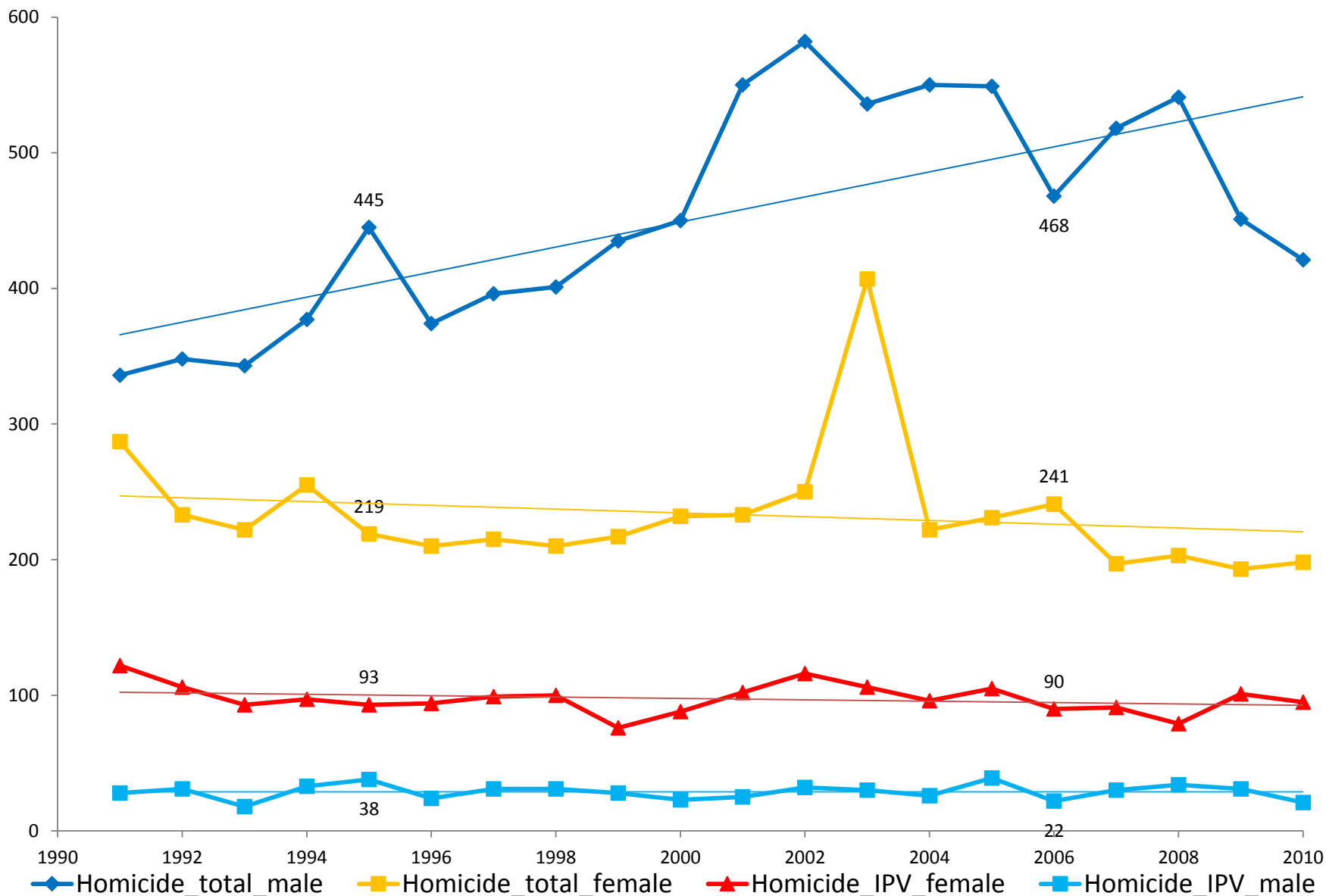




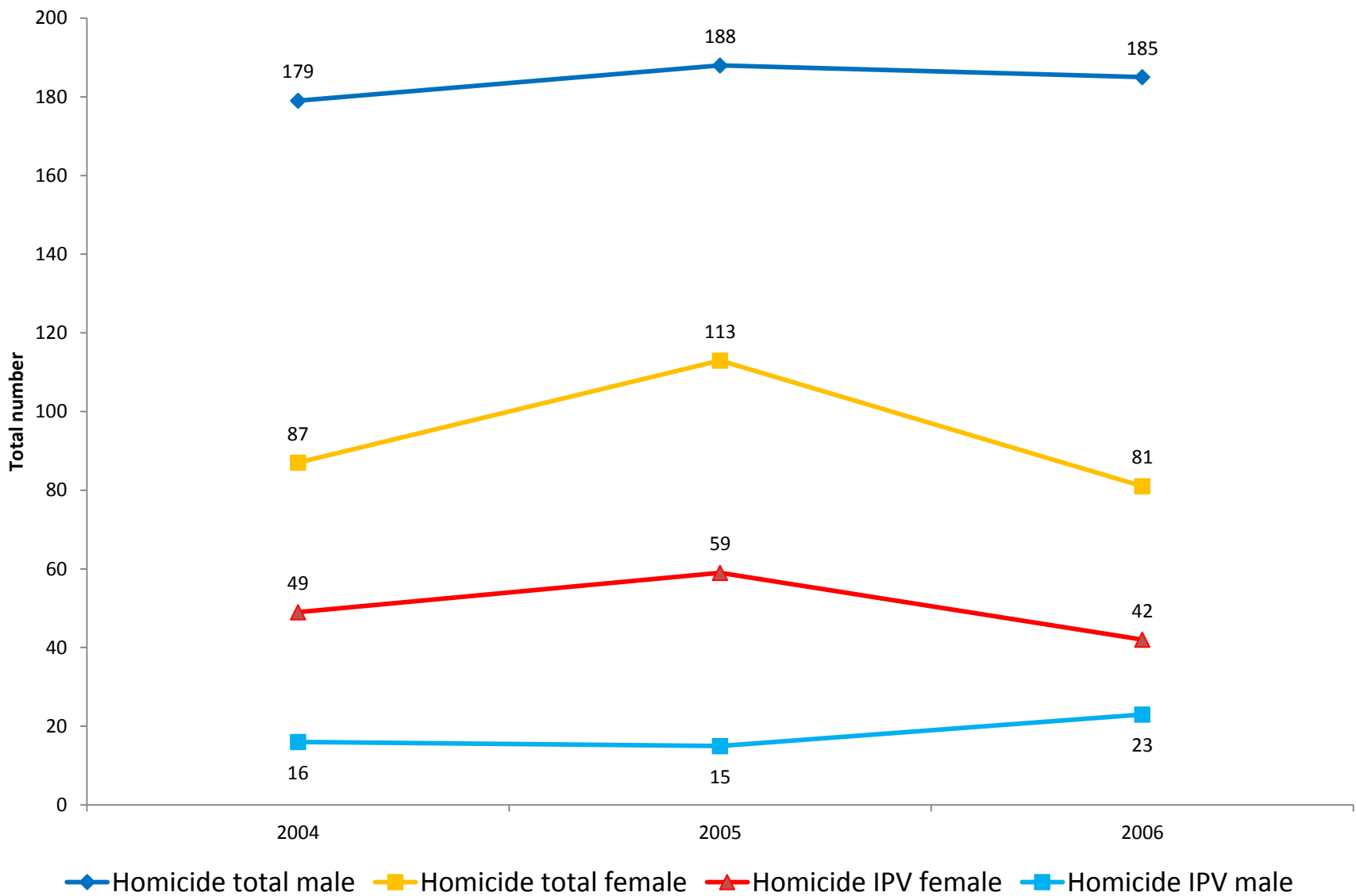
# Focus on intimate partner homicides - USA



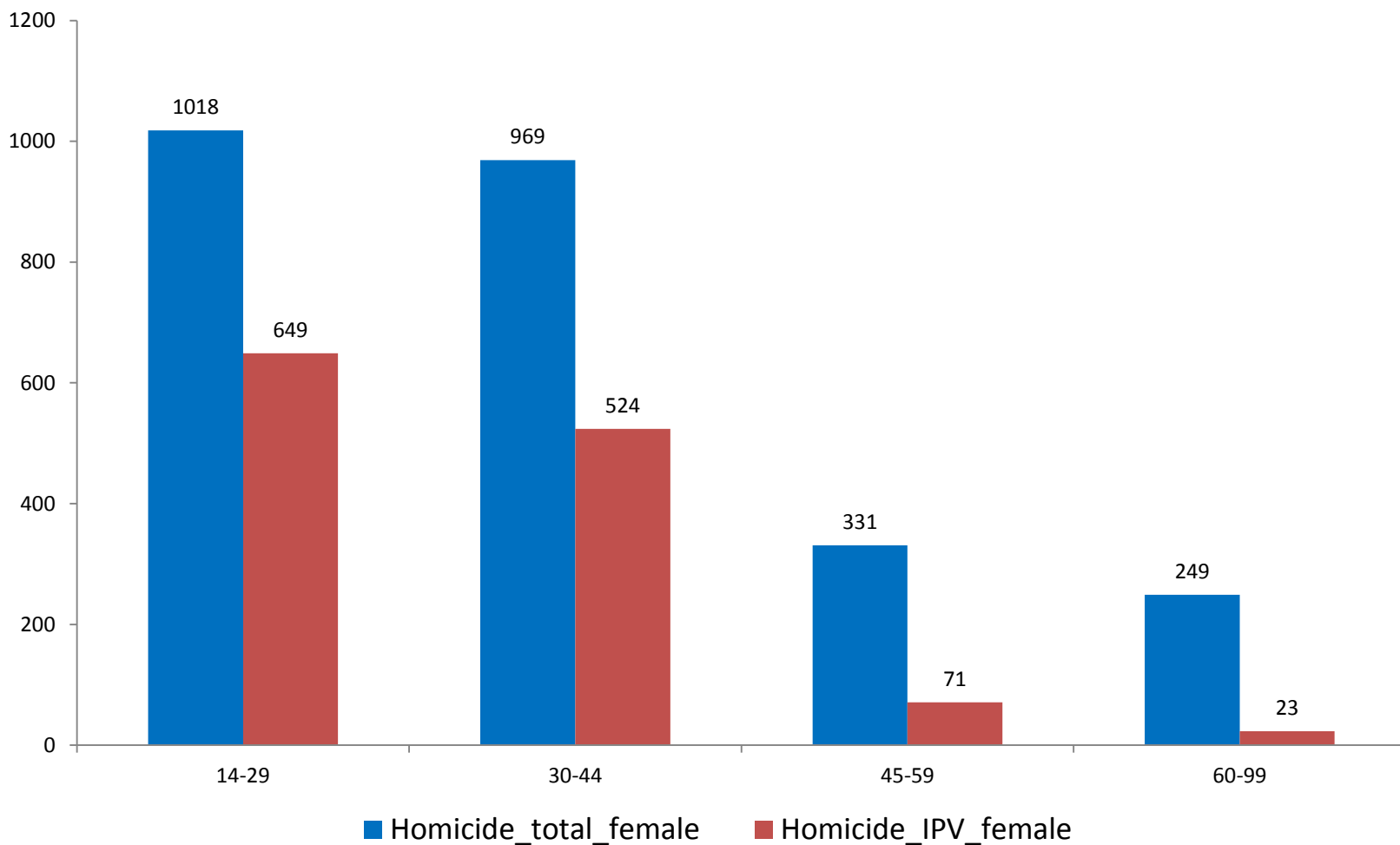
# Trends in homicide and IPV homicides in the UK



# Trends in homicide and IPV homicides in Australia



# The age component: Intimate partner femicide in South Africa





# Beyond the prevalence data...

**Murder of collaterals** in intimate partner conflict.

[Murder—mother-in-law] [He] raped and strangled his mother-in-law immediately after release from prison for a conviction for assaulting his partner [victim's daughter].

“After I knocked her [murder victim] about the head, I knifed her. She just wouldn't shut up.”

[He] objected to mother-in-law's “interference.”  
(Dobash & Dobash 2012)

# Beyond the prevalence data...

## Children of murdered partners

We have an odd relationship. I go over . . . .  
*Obviously* if he calls me and needs something, I would go over. . . . He doesn't have anybody else. It's not going to hurt me. . . I'm not diminished by that. He is still my father. Regardless of what our relationship is and the feeling is certainly different than what I think it is supposed to be for a father, but he's all I've got and I'm all he's got ... (Laughton 2008)

# Kirsty Treloar



Murdered by her boyfriend in front of their 26 day old girl, after he also attacked her brother and sister who tried to protect her.

Hours before the attack he wrote her a message:

Okay wer all gud now and my new yrs ressy is that I aint going to hit u again and I won't hit u 4 this yr next yr the yr after that the next yr after that.

He added:

'But I wont u to swear on (their daughter's) life u wont p\*\*\* me off and do things to make me angry love you 4 eva.' (sic).



# Conclusions

- Men are by far more likely to be killed by any perpetrator than women
- Intimate partner homicide affects women more than men, in many countries a third to a half of the homicides of women are committed by intimate partners.
- Approximately 5-10 percent of male homicides are committed by intimate partners
- Missing data is an important, not to be neglected issue

# Recommendations

## Data collection

- Limited compilation of routine data on intimate partner homicide – especially outside high income countries
- Important that data systems routinely integrate questions on perpetrator of homicide



# Recommendations

## Policy

- Increase awareness that reducing IPV reduces homicides
- IPV services need to be increase their awareness of the danger women are into when they are in and leave abusive relationships

*EVERY WOMAN,  
MAN AND  
CHILD HAS  
A RIGHT  
TO BE  
FREE  
FROM  
VIOLENCE  
OF ANY  
KIND*



[heidi.stoeckl@lshtm.ac.uk](mailto:heidi.stoeckl@lshtm.ac.uk)

